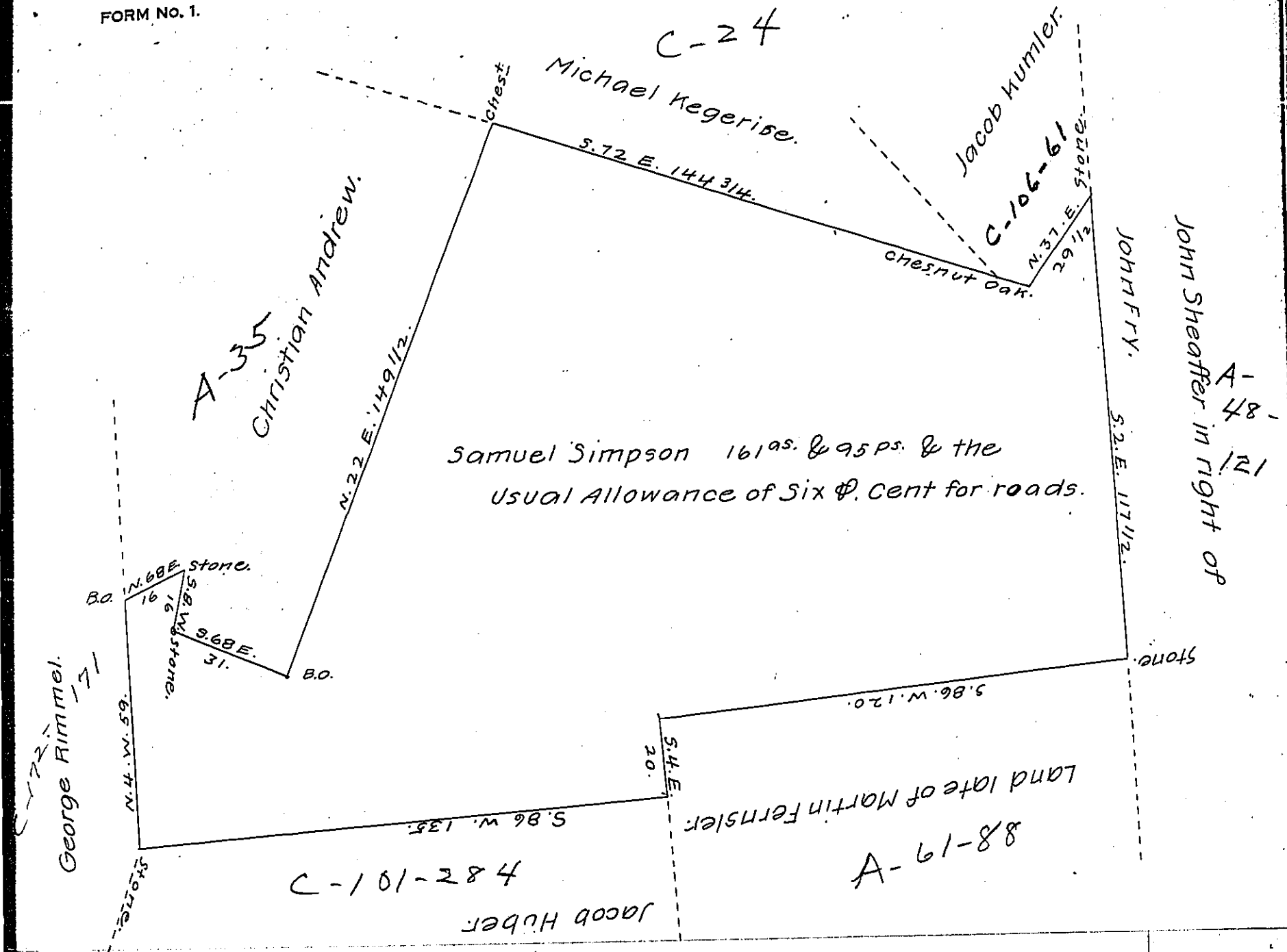


FORM NO. 1.

C-24



A Draught of a Tract of land Situate in Cocalico Township in the County of Lancaster Containing One hundred and sixty One Acres and Ninety five perches and the usual Allowance of Six ϕ . Cent for roads Surveyed the 11th day of August 1790, by Henry Ream then deputy Surveyor for Samuel Simpson by Virtue of his Warrant dated the fourth of August A.D. 1790. Taken from his field-works remaining in my Office June 24th A.D. 1814.

pr

Jacob Hibshman, D.S.

To Richard T. Leech, Esq.,
Surveyor General.

IN TESTIMONY that the above is a copy of the original remaining on file in the Department of Internal Affairs of Pennsylvania, made conformably to an Act of Assembly approved the 16th day of February 1833, I have hereunto set my hand and caused the Seal of said Department to be affixed at Harrisburg, this sixteenth day of May, 1907.

Henry Bond
Secretary of Internal Affairs.